

Rapsódia Sefaradi

Fagote 1

para banda sinfônica - for symphonic band

Alexandre Fracalanza Travassos

Andante apassionato $\text{♩} = 90$

Measure 1: *ff*

Measure 7: *p*

Measure 15: *ad libitum* $\frac{2}{2}$ *accelerando rit.* $\frac{2}{2}$

Measure 20: *Andante* $\frac{11}{11}$ *p*

Measure 35: *mf* *cresc.* *f*

Measure 51: *ff* *f*

Measure 56: *L'istesso tempo* $\frac{16}{16}$

Measure 73: *p*

Measure 80: *81*

Measure 85:

Measure 90:

2

fagote 1

97



104



110

116 *diminuendo**diminuendo*

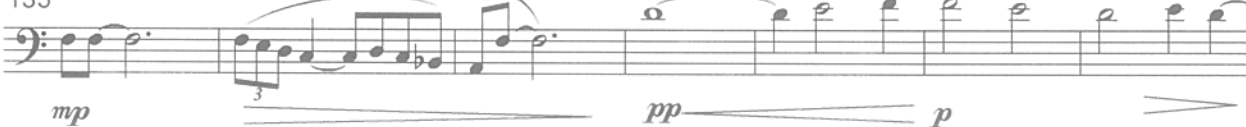
125 Lento
Molto rubato

122 *ritardando*

129



135



142



150

accelerando

155 Allegro



156



166 **5** 1. 2.

f

176 1. 2.

180

185 1. 2. *f*

190 1. 2.

196 1. 2.

201 *ff* 1. 2.

208

213 1. 2. **215** Andante apassionato ♩ = 90

217 *ritenuto* *mf* *Allegro* *fp* *Andante apassionato* ♩ = 90 *accelerando al fine* *fff*

cresc. molto